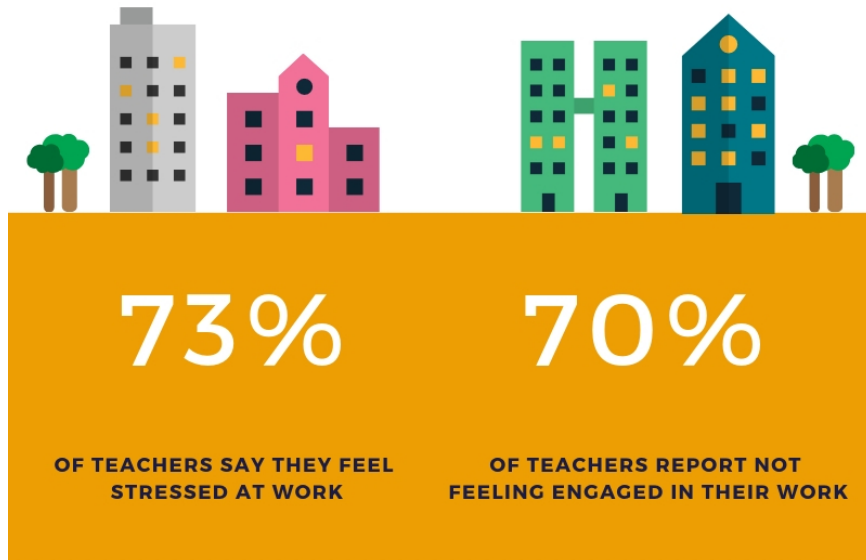




# COST OF EDUCATOR STRESS

## Educator Stress Equals Big Losses



EDUCATOR STRESS HAS BEEN LINKED TO **DECREASED EFFECTIVENESS IN TEACHING PERFORMANCE** AND A LOWERING OF STUDENT PERFORMANCE.

EDUCATOR STRESS CAN LEAD TO TEACHER BURNOUT & TURNOVER.

**50%** OF TEACHERS LEAVE THE PROFESSION IN THE FIRST 5 YEARS

**70%** TEACHER TURNOVER IS 70% GREATER IN SCHOOLS THAT SERVE PRIMARILY STUDENTS OF COLOR



**\$70,000 URBAN SCHOOL COST OF ATTRITION**  
**\$33,000 NON-URBAN SCHOOL COST OF ATTRITION**

**\$7 BILLION**

THE NATIONAL COMMISSION ON TEACHING AND AMERICA'S FUTURE (NCTAF) ESTIMATES THAT THE NATIONAL COST OF PUBLIC SCHOOL TEACHER TURNOVER COULD BE \$7 BILLION A YEAR

[WWW.WELLBEINGFORTEACHERS.COM](http://WWW.WELLBEINGFORTEACHERS.COM)

Carroll, Thomas. (2007). The High Cost of Teacher Turnover. Policy Brief. 2015 Quality of Worklife Survey; American Federation of Teachers 2013-2014 Gallup Survey